

CXSH-4

**SURFACE MOUNT SILICON
SCHOTTKY RECTIFIER**



SOT-89 CASE



www.centrasemi.com

DESCRIPTION:

The CENTRAL SEMICONDUCTOR CXSH-4 type is a Schottky barrier rectifier mounted in an epoxy molded case using a metal to silicon junction to yield low forward voltage drop. This device utilizes a single chip with anode connections made to PIN 1 and PIN 3.

MARKING: FULL PART NUMBER

MAXIMUM RATINGS: ($T_A=25^{\circ}\text{C}$)

Peak Repetitive Reverse Voltage
DC Blocking Voltage
RMS Reverse Voltage
Average Forward Current
Peak Forward Surge Current, $t_p=8.3\text{ms}$
Operating and Storage Junction Temperature

SYMBOL

V_{RRM} 40
 V_R 40
 $V_{R(RMS)}$ 28
 I_O 1.0
 I_{FSM} 10
 T_J, T_{stg} -65 to +150

UNITS

V
V
V
A
A
 $^{\circ}\text{C}$

ELECTRICAL CHARACTERISTICS: ($T_A=25^{\circ}\text{C}$ unless otherwise noted)

SYMBOL

TEST CONDITIONS

MAX

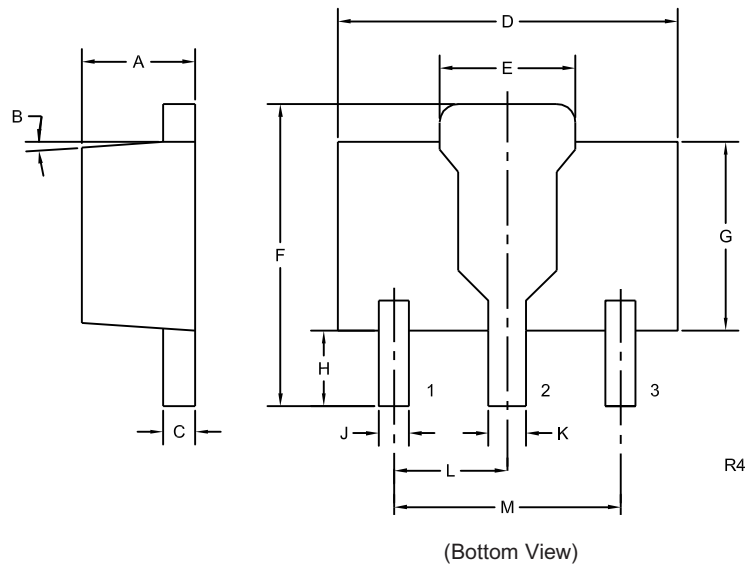
UNITS

I_R	$V_R=40\text{V}$	1.0	mA
I_R	$V_R=40\text{V}, T_A=100^{\circ}\text{C}$	10	mA
V_F	$I_F=1.0\text{A}$	0.55	V

CXSH-4
SURFACE MOUNT SILICON
SCHOTTKY RECTIFIER



SOT-89 CASE - MECHANICAL OUTLINE

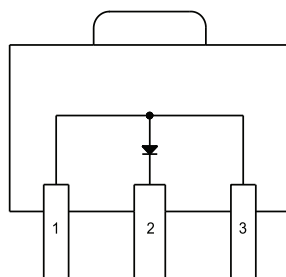


LEAD CODE:

- 1) Anode
- 2) Cathode
- 3) Anode

MARKING:

FULL PART NUMBER



Bottom View
 (Tab not shown)

SYMBOL	INCHES		MILLIMETERS	
	MIN	MAX	MIN	MAX
A	0.055	0.067	1.40	1.70
B	4°		4°	
C	0.014	0.018	0.35	0.46
D	0.173	0.185	4.40	4.70
E	0.064	0.074	1.62	1.87
F	0.146	0.177	3.70	4.50
G	0.090	0.106	2.29	2.70
H	0.028	0.051	0.70	1.30
J	0.014	0.019	0.36	0.48
K	0.017	0.023	0.44	0.58
L	0.059		1.50	
M	0.118		3.00	

SOT-89 (REV: R4)

R8 (22-December 2015)

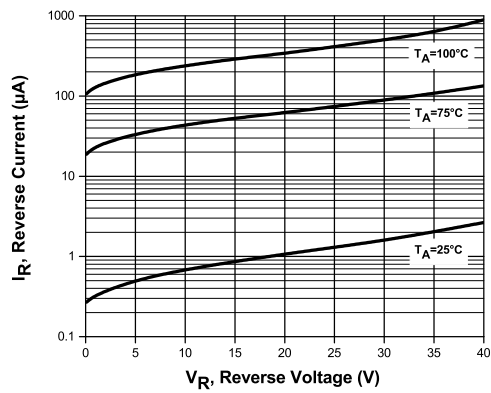
CXSH-4

SURFACE MOUNT SILICON
SCHOTTKY RECTIFIER

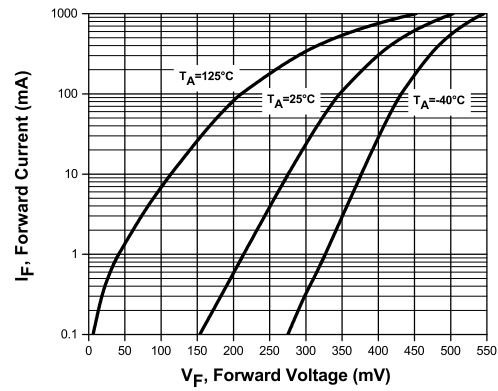


TYPICAL ELECTRICAL CHARACTERISTICS

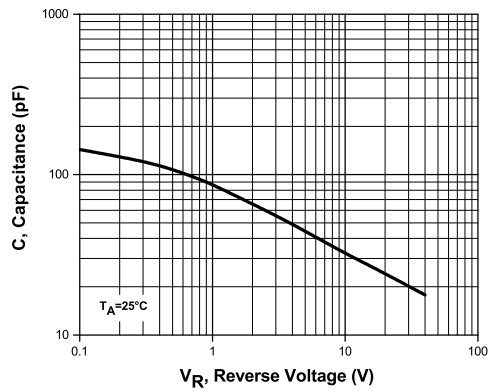
Leakage Current



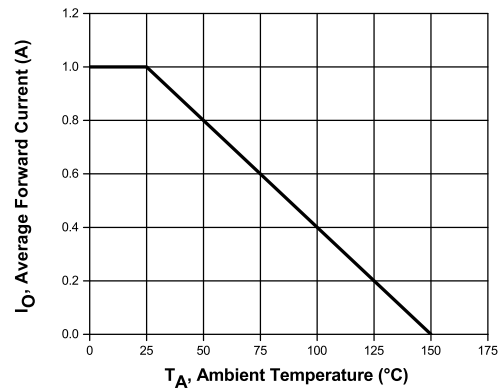
Forward Voltage



Capacitance



Current Derating



R8 (22-December 2015)

OUTSTANDING SUPPORT AND SUPERIOR SERVICES



PRODUCT SUPPORT

Central's operations team provides the highest level of support to insure product is delivered on-time.

- Supply management (Customer portals)
- Inventory bonding
- Consolidated shipping options
- Custom bar coding for shipments
- Custom product packing

DESIGNER SUPPORT/SERVICES

Central's applications engineering team is ready to discuss your design challenges. Just ask.

- Free quick ship samples (2nd day air)
- Online technical data and parametric search
- SPICE models
- Custom electrical curves
- Environmental regulation compliance
- Customer specific screening
- Up-screening capabilities
- Special wafer diffusions
- PbSn plating options
- Package details
- Application notes
- Application and design sample kits
- Custom product and package development

REQUESTING PRODUCT PLATING

1. If requesting Tin/Lead plated devices, add the suffix "TIN/LEAD" to the part number when ordering (example: 2N2222A TIN/LEAD).
2. If requesting Lead (Pb) Free plated devices, add the suffix "PBFREE" to the part number when ordering (example: 2N2222A PBFREE).

CONTACT US

Corporate Headquarters & Customer Support Team

Central Semiconductor Corp.
145 Adams Avenue
Hauppauge, NY 11788 USA
Main Tel: (631) 435-1110
Main Fax: (631) 435-1824
Support Team Fax: (631) 435-3388
www.centrasemi.com

Worldwide Field Representatives:
www.centrasemi.com/wwreps

Worldwide Distributors:
www.centrasemi.com/wwdistributors

For the latest version of Central Semiconductor's **LIMITATIONS AND DAMAGES DISCLAIMER**, which is part of Central's Standard Terms and Conditions of sale, visit: www.centrasemi.com/terms